



INSTRUCCIONES DE MONTAJE

ANCLAJE CASCADA MINI BALI

ASSEMBLY INSTRUCTIONS

ANCHOR FOR WATER CURTAIN MINI BALI

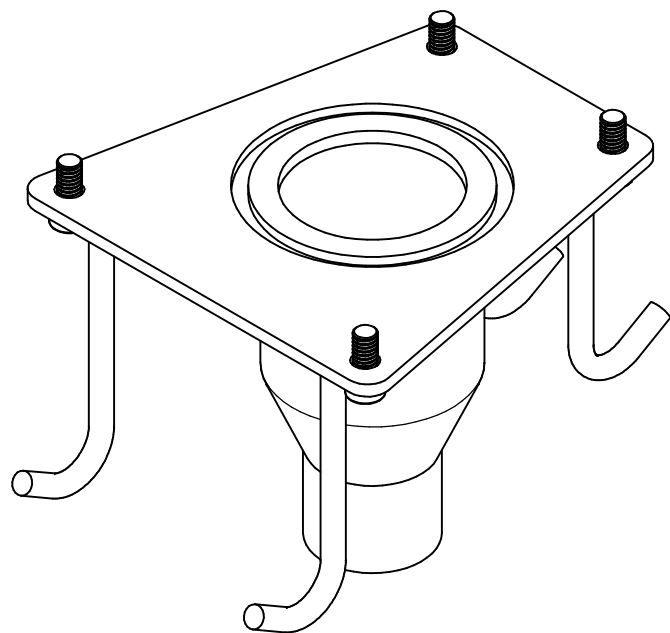
INSTRUCTIONS DE MONTAGE

ANCRAGE POUR CASCADE MINI BALI

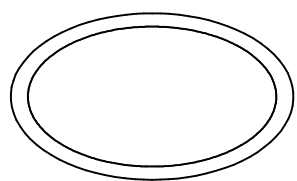
MONTAGEANLEITUNGEN

VERANKERUNG WASSERFALL MINI BALI

09940161



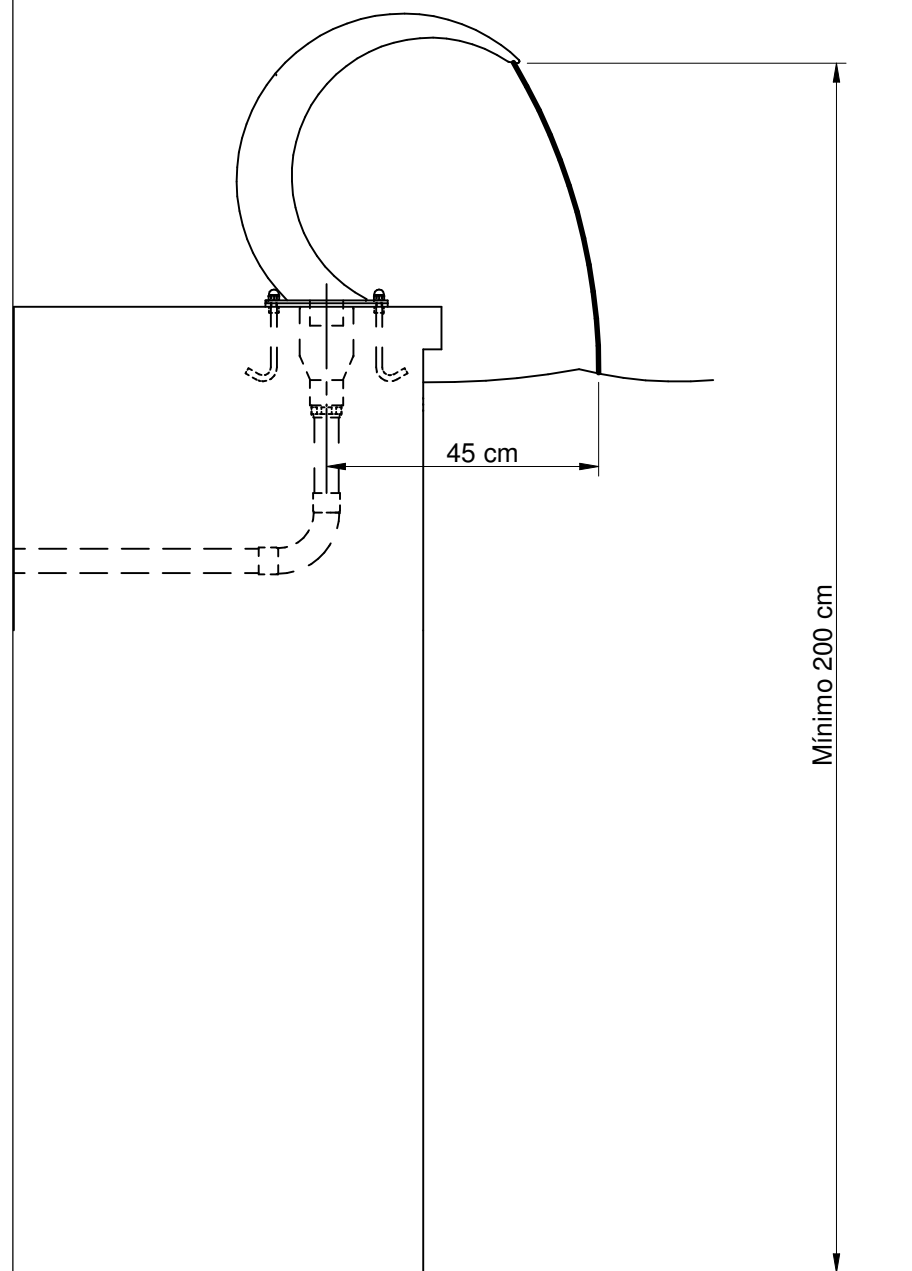
x 1



x 1



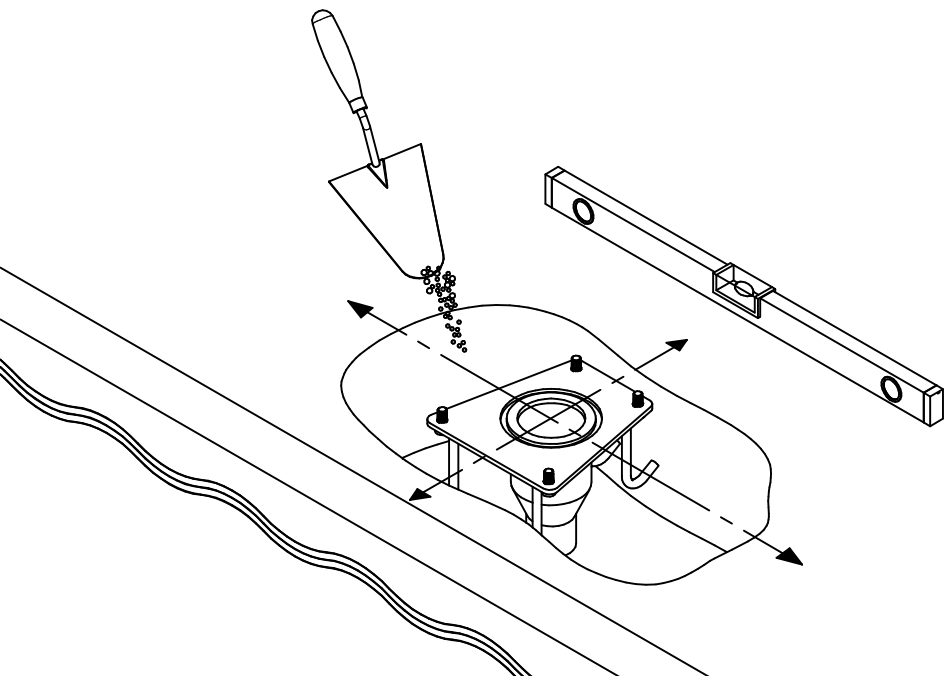
x 4



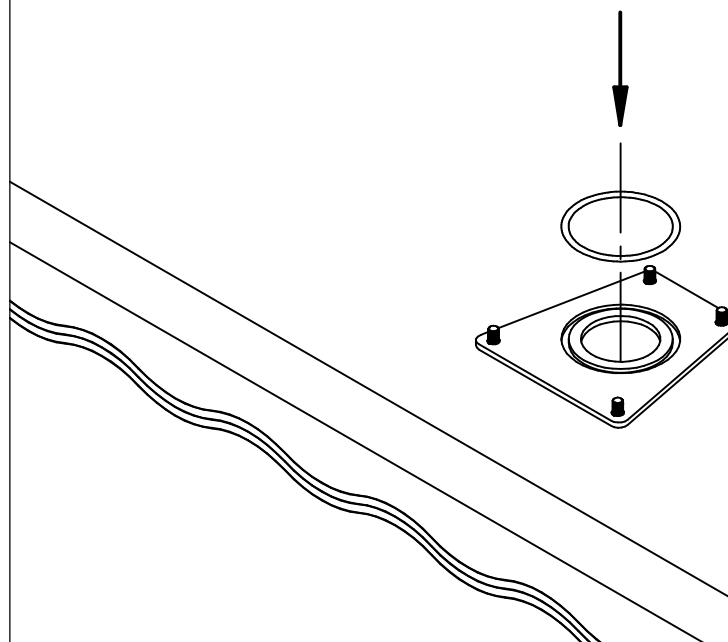
45 cm

Mínimo 200 cm

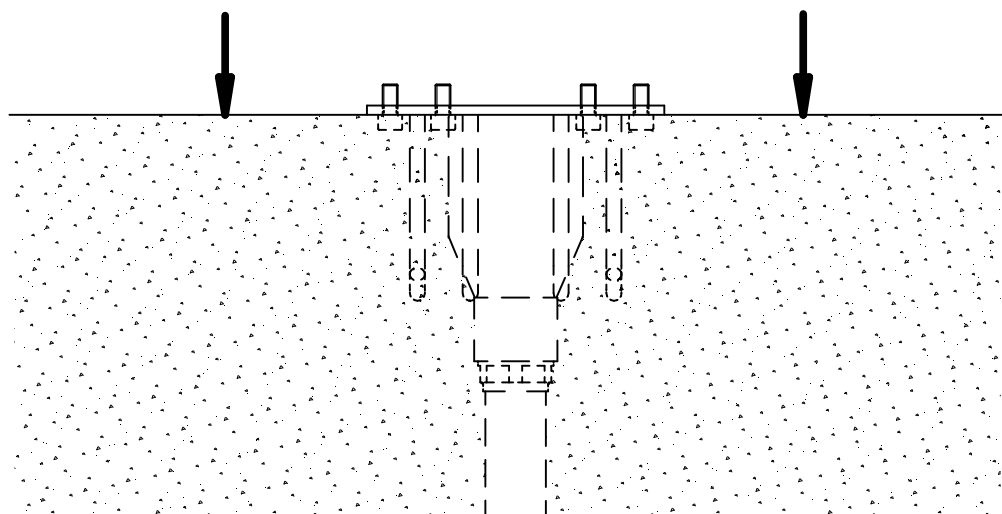
3



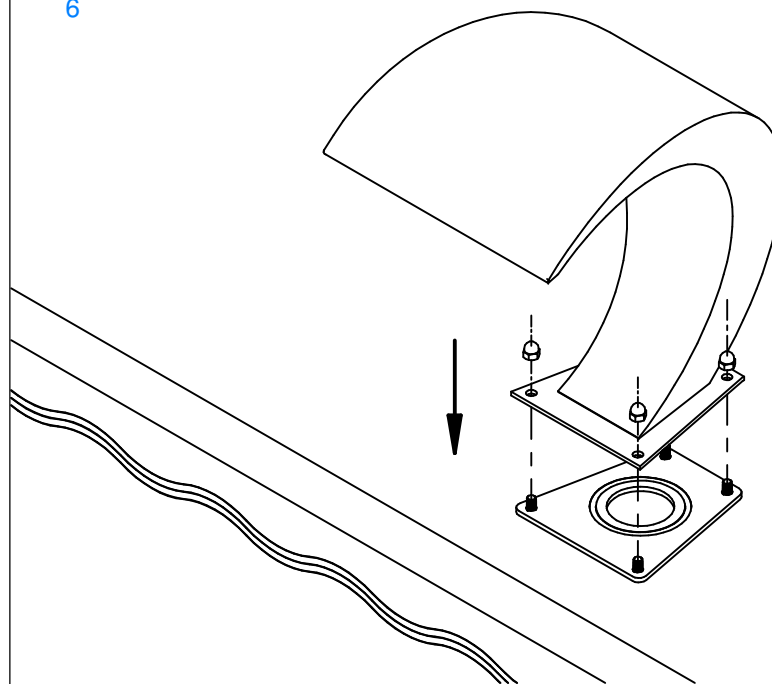
5



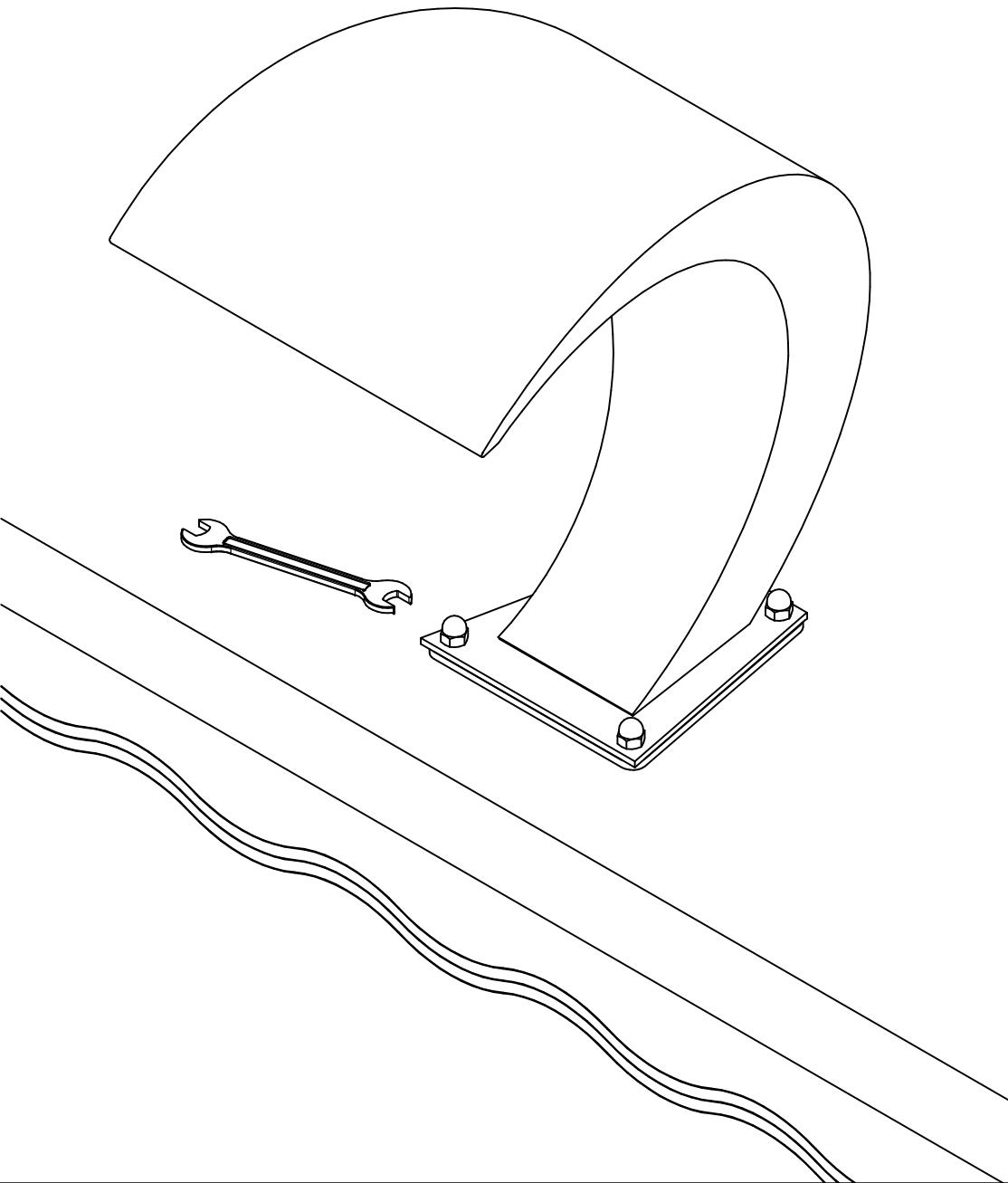
4



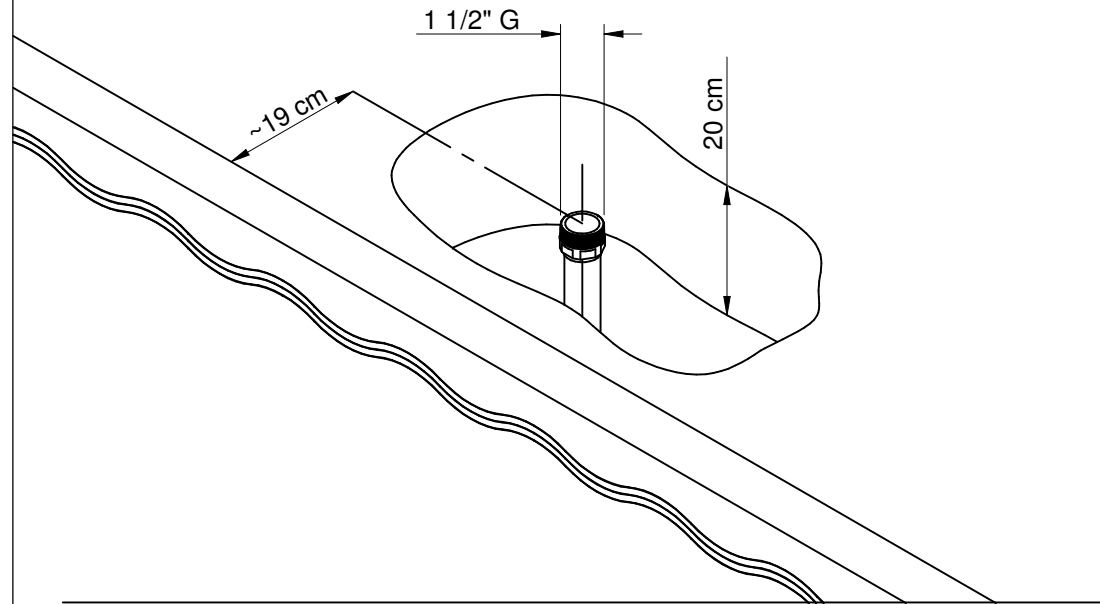
6



7



1



2

